

***Guide to downloading and the
installation of
QCM Direct **Prima*****

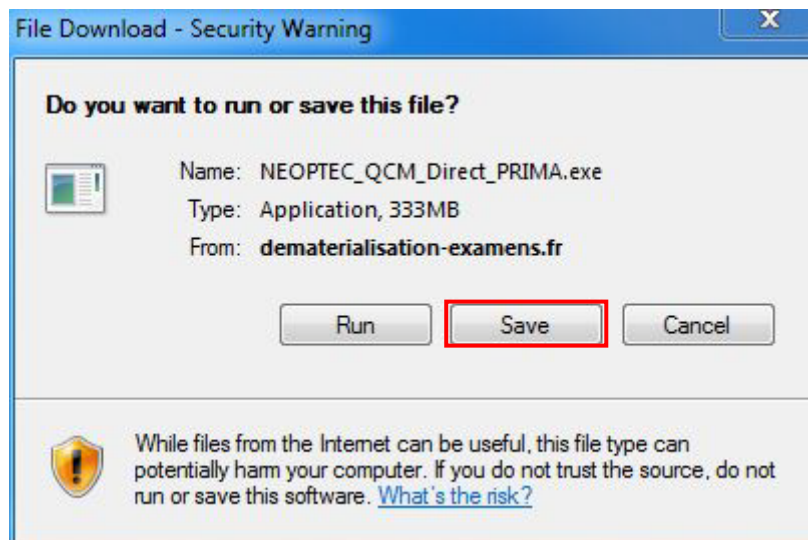
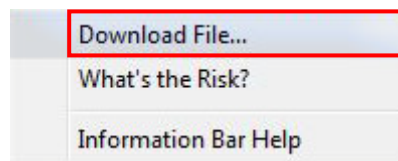
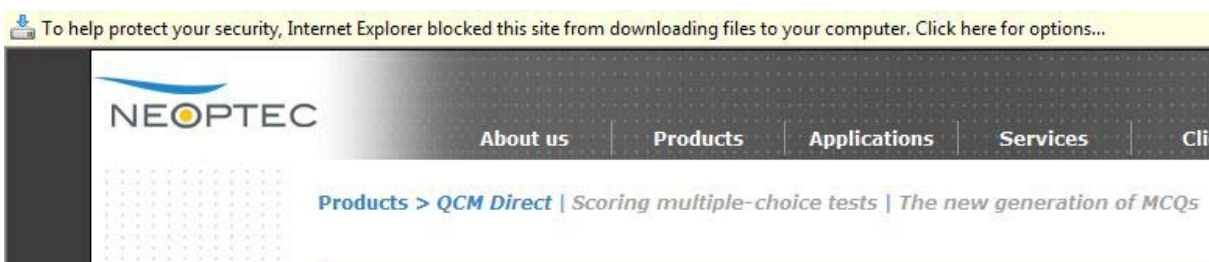
10

We would like to remind you that QCM Direct is professional software and its installation differs from public software. That's why we offer you this guide to help you facilitate its implementation.

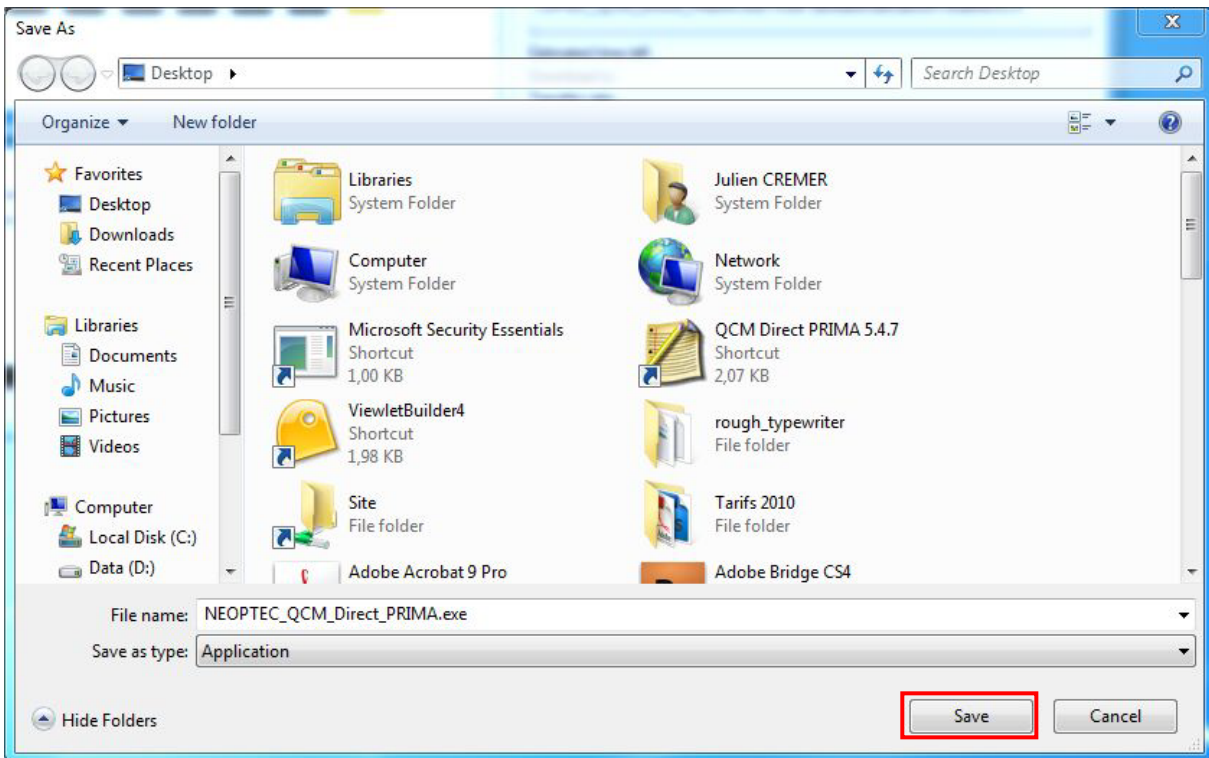
DOWNLOAD.

When clicking the button "download" the download process begins.

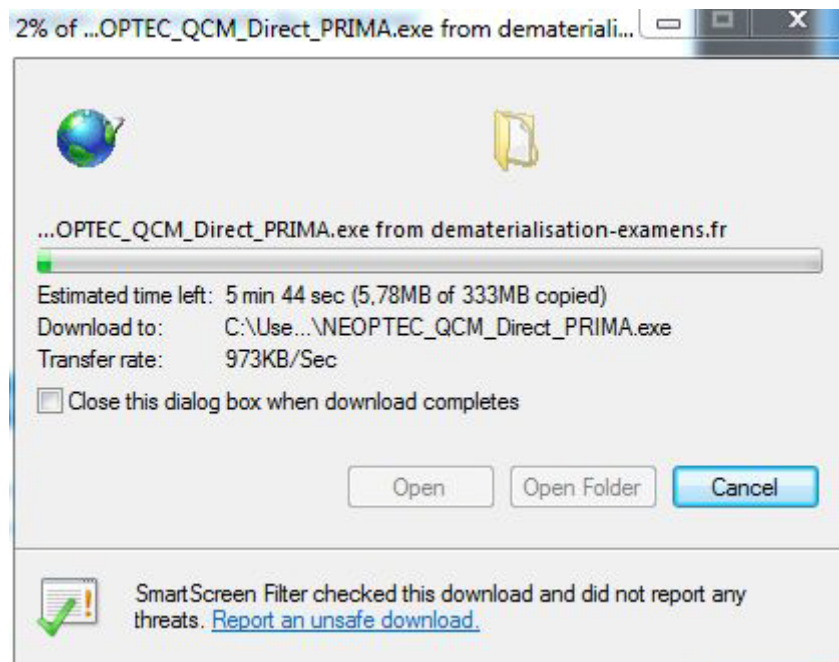
Attention: The download may be blocked by some browsers such as Internet Explorer. This is quite normal, the yellow bar will appear at the top of the window, you need to right click on your mouse and click on "download file".



In Mozilla Firefox, there will not have this problem. A dialog box appears allowing you to select the folder where you want to save your file (It is recommended to save it on your desktop in order to retrieve it rapidly "C: \ Desktop \").



Once you click 'Save' the download starts. The software is 333 MB, this size is not trivial, which means that it is professional software, with multiple features. According to your Internet connection and your bandwidth (ADSL recommended) this may take 15min to 2h30.

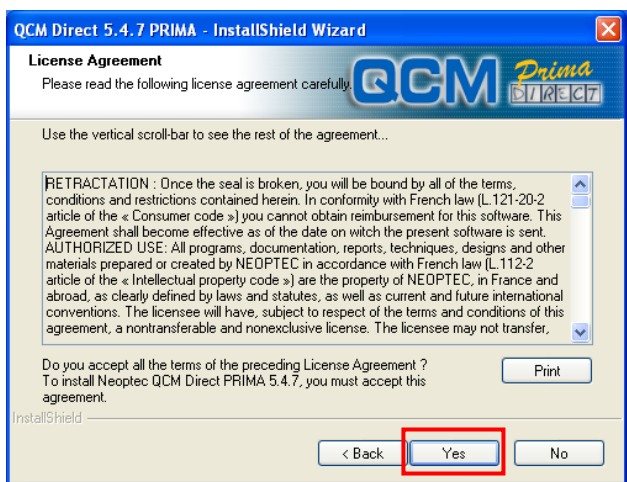
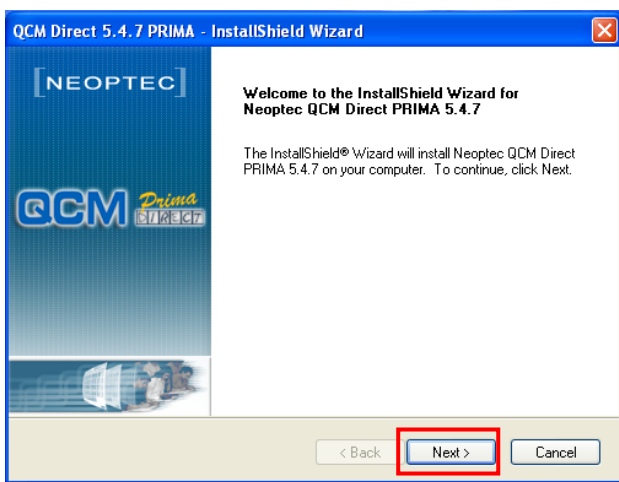


INSTALLATION.

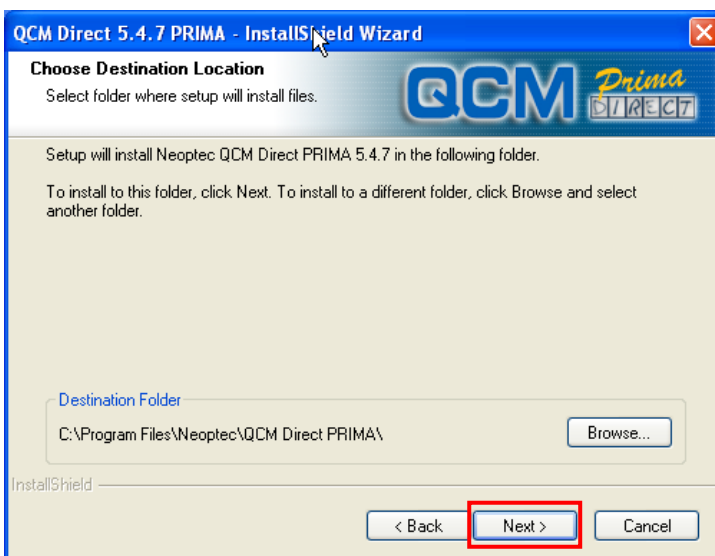
When the download is finished, on your desktop (or the place where you saved the file) you have an icon **NEOPTec_QCM_Direct_PRIMA.exe**.

Double click to launch the installation procedure. The installation wizard will guide you throughout the procedure.

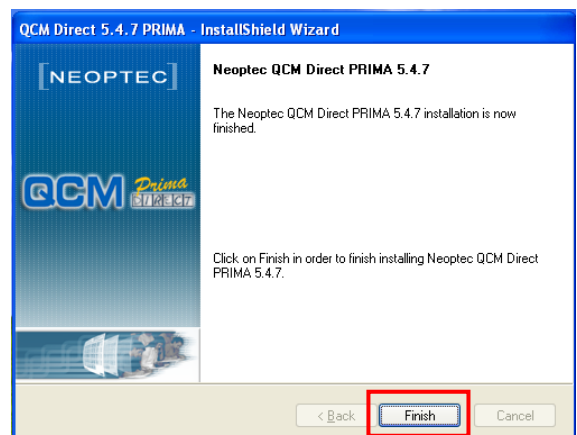
You simply need to click each time on "Next". After reading the license agreement, click "Yes" to confirm that you accept all terms of the license agreement.



A new window appears asking you to choose the destination folder. It is strongly advised to maintain the default folder. Simply click on "Next".



The installation begins. Once completed, a new dialog box appears. Click "Finish".



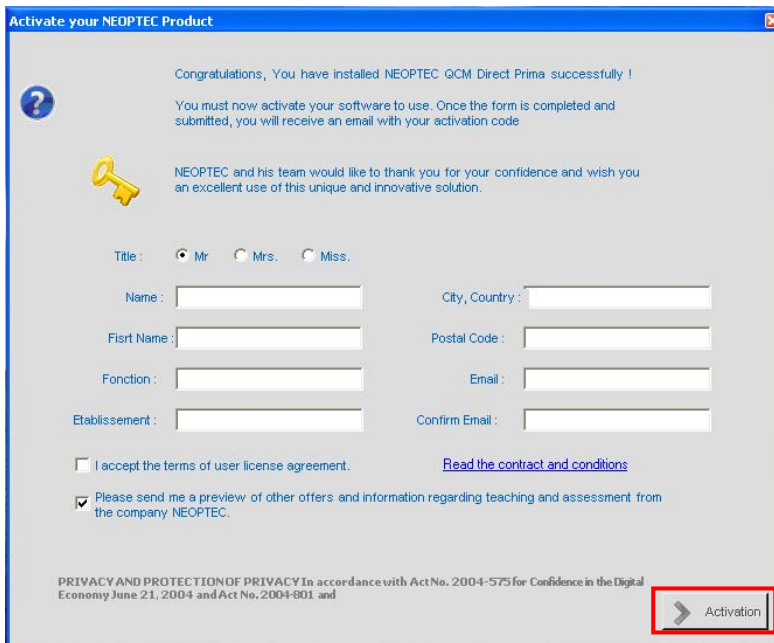
The installation of QCM DIRECT PRIMA is now completed.

An icon was placed on your desktop to launch the software:

Double click to launch. A registration process is triggered by your first launch. It simply allows you to obtain a license key to validate the authenticity of your version.



PROCEDURE OF REGISTRATION.

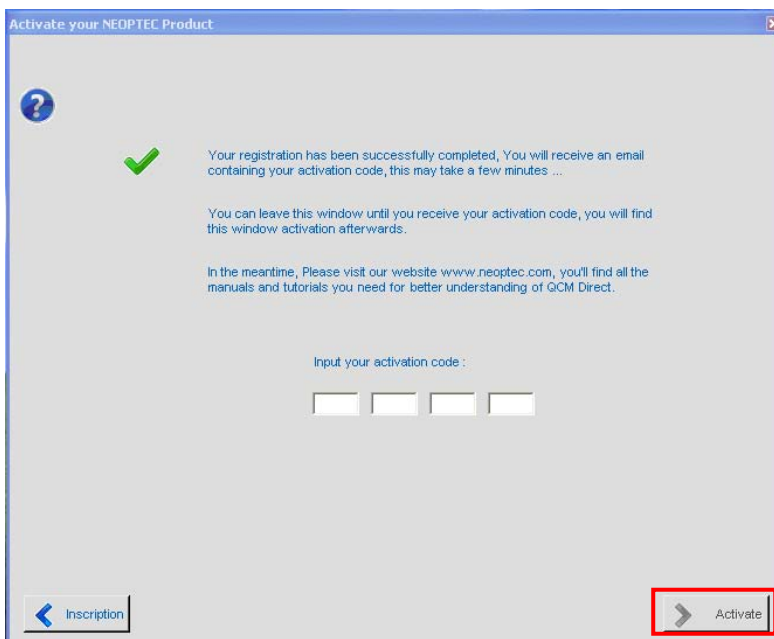


To activate your software, please fill in these fields in this form. **Please be sure to fill in correctly the required fields as this information will appear on your educational documents.**

IMPORTANT: You must agree to the license terms of the contract to activate the software.

Then click on "activation".

The procedure is started, you will receive an email with the activation code. This may take several minutes.

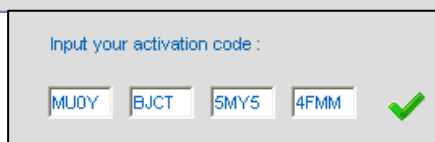


It is not necessary to repeat the procedure, you can close this window while waiting for your activation code. As long as your activation code is not entered, this window will open automatically every time you launch the software.

Once received the code, copy and paste it in the first editable box (Ctrl + C / Ctrl + V)

A green check mark indicates that your code is validated.

Click on "Activate" to finish the activation.



The software can then be started and ready to use.

Thank you for downloading QCM DIRECT PRIMA

For all additional information: 04 67 41 68 68 - info@neoptec.com